

MONTHLY MEMBERSHIP PROGRESS REPORT

LOCATION RHODE ISLAND

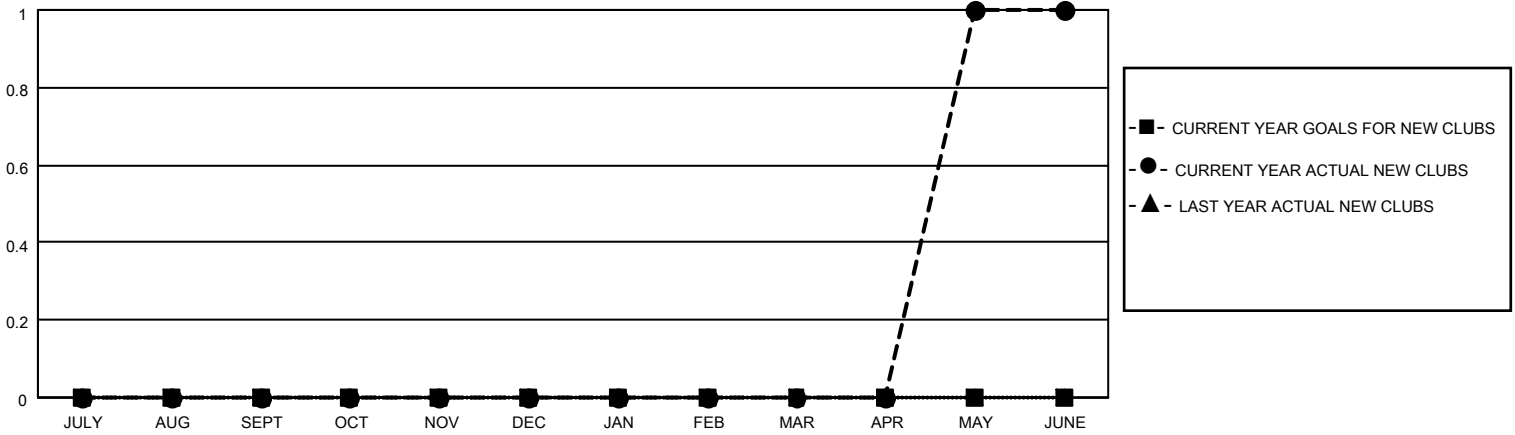
District 42

Results as of: 6/30/2021

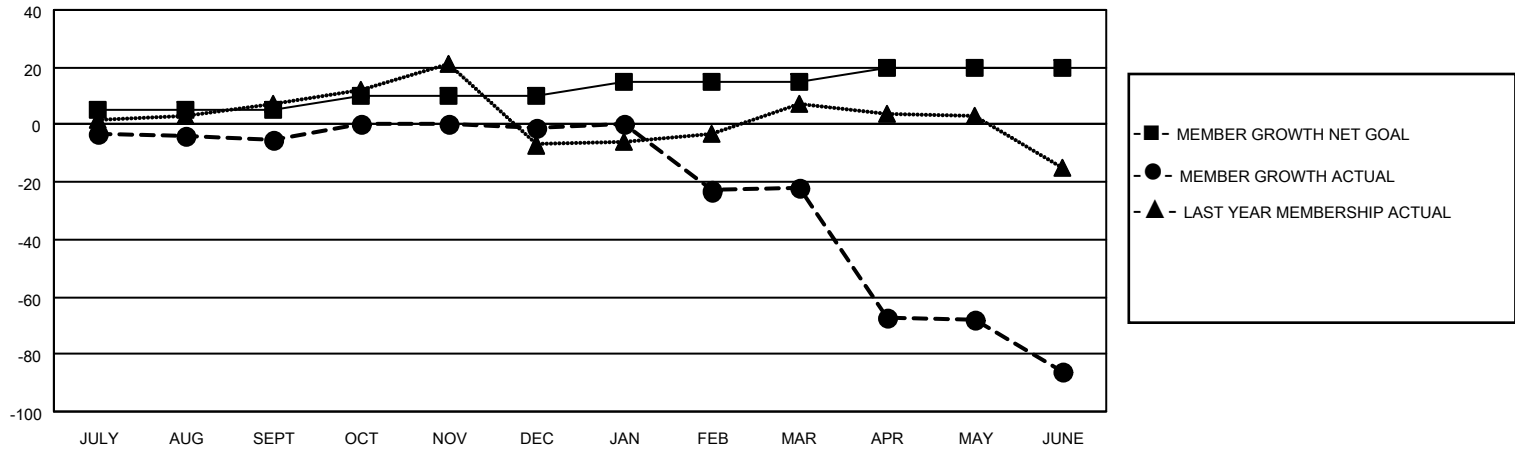
Clubs			
RESULTS FOR 2020-2021			
QUARTER	NEW CLUB GOAL	NEW CLUBS	DROPPED CLUBS
JULY/AUG/SEPT	0	0	0
OCT/NOV/DEC	0	0	0
JAN/FEB/MAR	0	0	2
APR/MAY/JUNE	0	1	0

Members			
RESULTS FOR 2020-2021			
QUARTER	MEMBER GROWTH NET GOAL	MEMBER GROWTH ACTUAL	DROPPED MEMBERS ACTUAL (including transfers)
JULY/AUG/SEPT	5	13	17
OCT/NOV/DEC	5	18	13
JAN/FEB/MAR	5	8	29
APR/MAY/JUNE	5	36	97

GOALS AND ACTUAL NEW CLUBS CUMULATIVE



GOALS AND ACTUAL MEMBERS CUMULATIVE



DROPPED CLUBS: 2	11 CLUBS OF 29 ADDED 1 OR MORE NEW MEMBERS	<u>GENDER DISTRIBUTION</u> MALE 722 (69.56%) FEMALE 316 (30.44%)
<u>DROPPED MEMBERS</u>	CLICK HERE FOR CUMULATIVE MEMBERSHIP DATA	TOTAL FAMILY UNIT MEMBERS 142
DECEASED 21		FAMILY MEMBERS PAYING HALF DUES 74
CLUB CANCELLED 22		
OTHER 113		
TOTAL 156		